

Battery Firmware Upgrade Manual

V2.0
27nd February, 2023



CONTENTS

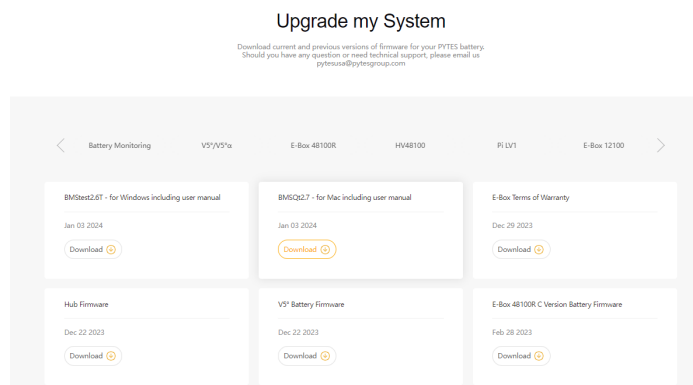
1. Prepare for the Upgrade	4
Step 1. Download the upgrade documents	4
Step 2. Get the suitable cable	4
2. Start Upgrading.....	5
Step 1. Connect the cable	5
Step 2. Turn on the Battery.....	7
Step 3. Run the BMSQt to Upgrade.....	7

2. Prepare for the Upgrade

Step 1. Download the upgrade documents

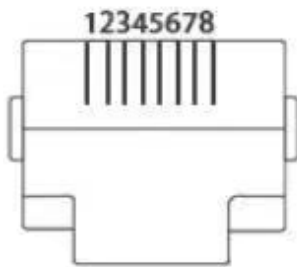
Download documents package from this link:

<https://www.pytesusa.com/Upgrade-my-System/>



Step 2. Get the suitable cable

Type II for V5°
(8 pin/RJ45 to USB)

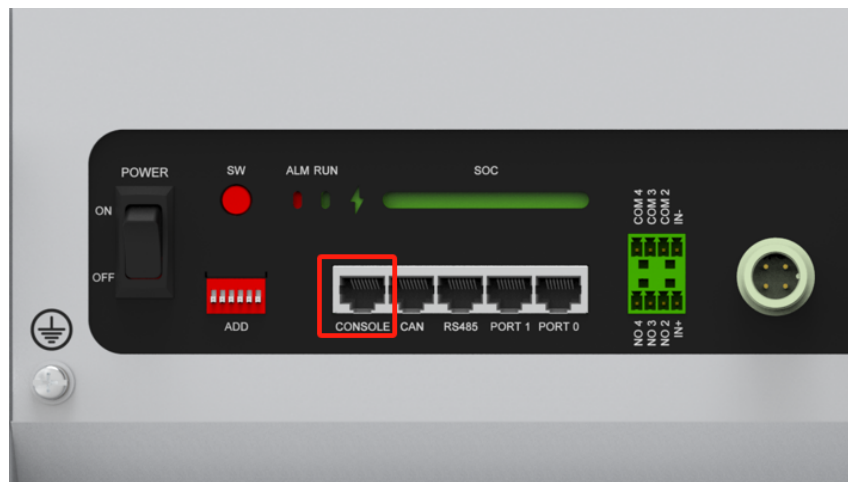


3. Start Upgrading

Step 1. Connect the cable

Connect the battery and PC/laptop with the Cable. The crystal end plugs in battery Console port and USB end plug in your PC/laptop.

Battery End



Computer End



Step 2. Turn on the Battery

After wiring, turn on the battery Power button and press the SW button for one second.



Step 3. Run the BMSQt to Upgrade

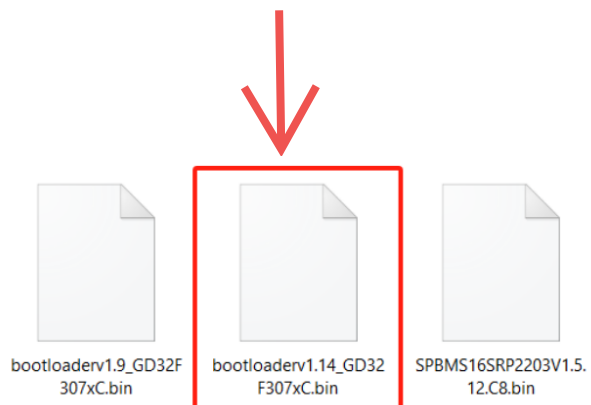
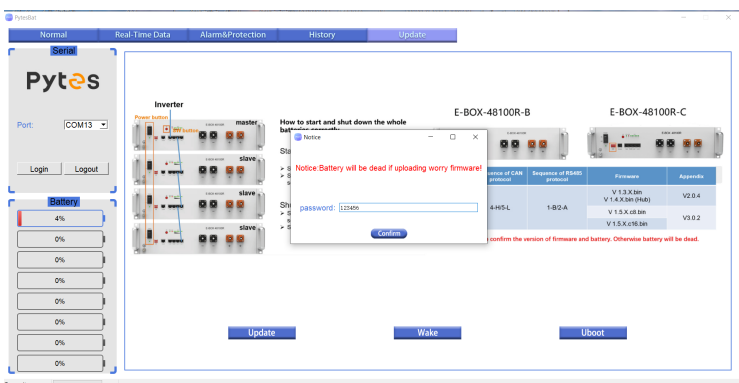
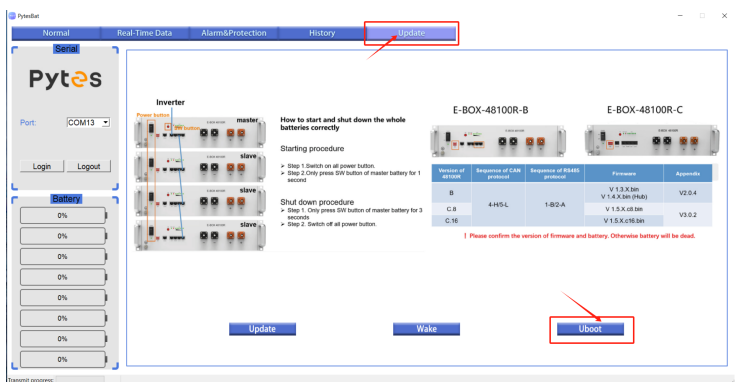
Name	Date modified	Type	Size
bearer	8/3/2023 3:41 PM	File folder	
iconengines	8/3/2023 3:42 PM	File folder	
imageformats	8/3/2023 3:42 PM	File folder	
log	1/4/2024 4:11 PM	File folder	
platforms	8/3/2023 3:41 PM	File folder	
styles	8/3/2023 3:41 PM	File folder	
translations	8/3/2023 3:42 PM	File folder	
BMSQt.exe	8/3/2023 3:41 PM	Application	1,869 KB
D3Dcompiler_47.dll	8/3/2023 3:41 PM	Application extens...	3,386 KB
data.txt	11/24/2023 6:00 PM	Text Document	2 KB
libEGL.dll	8/3/2023 3:40 PM	Application extens...	66 KB
libgcc_s_dw2-1.dll	8/3/2023 3:40 PM	Application extens...	112 KB
libGLESv2.dll	8/3/2023 3:41 PM	Application extens...	7,607 KB
libstdc++-6.dll	8/3/2023 3:40 PM	Application extens...	1,507 KB
libwinpthread-1.dll	8/3/2023 3:40 PM	Application extens...	46 KB
opengl32sw.dll	8/3/2023 3:40 PM	Application extens...	15,621 KB
protection value.txt	11/24/2023 6:00 PM	Text Document	6 KB
Qt5Charts.dll	8/3/2023 3:40 PM	Application extens...	2,472 KB
Qt5Core.dll	8/3/2023 3:41 PM	Application extens...	8,263 KB

→Choose COMX Port
→New Connection →COMX*
→Click Login

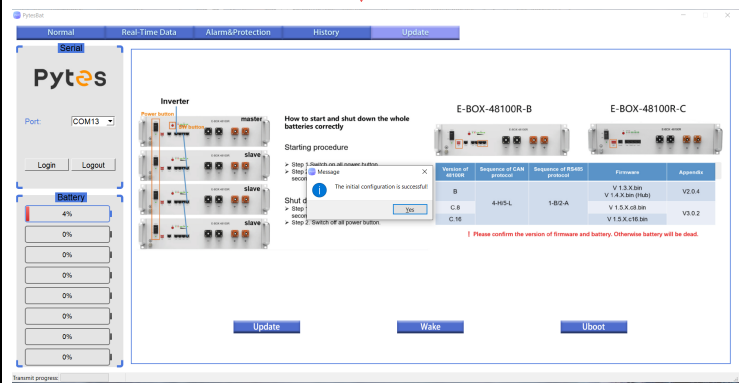
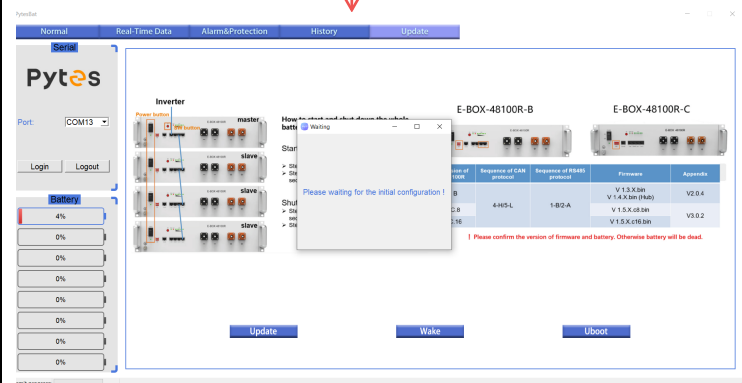
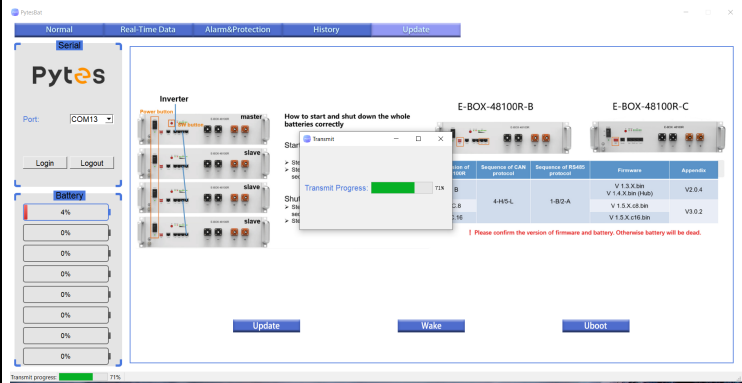
*The COM number may vary, it doesn't matter.

→Click Update in the Menu banner
→First, Click Uboot to upgrade the bootloader

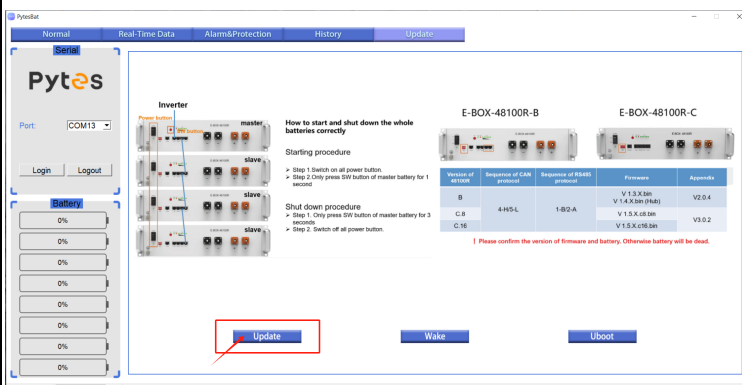
→Enter the password:123456
→Review the file path, choose the bootloader bin file and upload



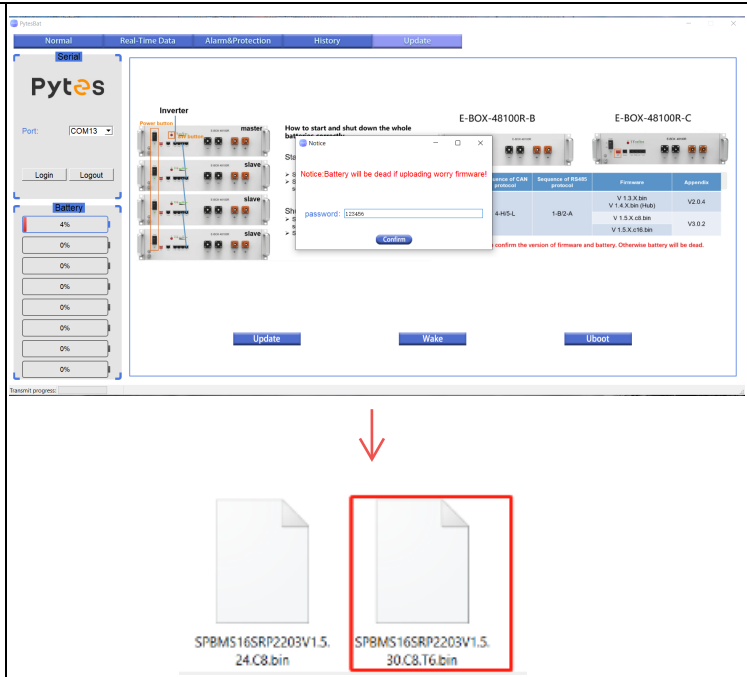
Please wait for the transmission progress completed



Click Update to upgrade the battery firmware



→Enter the password:123456
→Review the file path, choose the SPBMS bin file and upload



Please wait for the transmission progress completed

